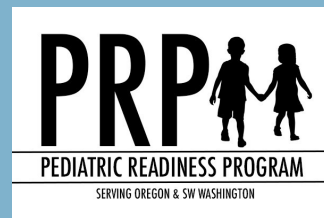


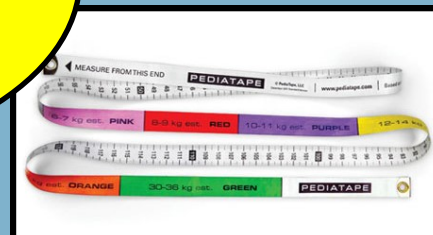
Pediatric Readiness Program



QI Initiative: Weight in Kilograms & Weight-based Dosing



Did you know that at least 25% of medication errors are related to weight-based dosing errors?



Policies	Infrastructure	EMR Optimization	Education
<ul style="list-style-type: none"> Weight taken and recorded in kilograms at every encounter 	<ul style="list-style-type: none"> Scales locked to kilograms only Medication administration safety 	<ul style="list-style-type: none"> Alerts Dosing calculators 	<ul style="list-style-type: none"> Care team education Resource library

QI Initiative Launch: April 1st

Hospitals will set individual goals and may join anytime!

For more information: www.pedsreadyprogram.org,
971-673-0564, rachel.l.ford@dhsosha.state.or.us